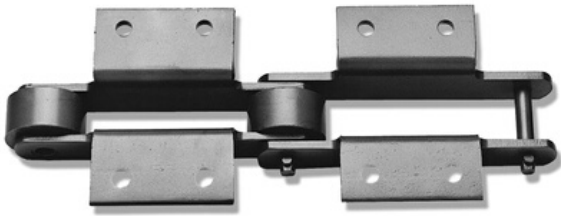




ADITAMENTOS PADRÃO



www.solutecindustrial.com.br
vendas@solutecindustrial.com.br



Double Pitch Chain

Double Pitch Chain has the same basic construction as standard roller chain, but chain pitch is twice as long, and the chain has flat-shaped link plates. This series is regulated by ISO 1275-A, ASME B29.100, and JIS B 1803.

Features:

1. Accurate tolerances for overall length.
2. Both R rollers and S rollers are available and can be selected to match the application.

Base Chain

S Roller Offset Link **R Roller** Offset Link

• Connecting links: RF2040 to RF2060 use spring clips. RF2080 and larger as well as chains with GNK1 attachments (all sizes) use cotter pins. Base chain pins are riveted.

Attachments

A1 Attachment **A2 Attachment** **EP Attachment** **GNK1 Attachment**

R roller type not available.

• Actual dimension P' may differ from P. Please contact a Tsubakimoto representative for details.

K1 Attachment **K2 Attachment** **SA1 Attachment**

SA2 Attachment **SK1 Attachment** **SK2 Attachment**

• Pins other than those on connecting links are riveted regardless of whether attachments are present.
 • Attachments shown are S roller type. However, the dimensions for attachments are the same when R rollers are used. Also, the drawings show attachments added on every link.

Note: RS sprockets can be used with S rollers if the sprocket has more than 30 teeth. A Double Pitch chain sprocket will be needed if the sprocket has fewer than 30 teeth. Please refer to separate Tsubaki Drive Chain catalog for more information on RS sprockets.



Standard Small Size Conveyor Chain

Special Small Size Conveyor Chain

Lube Free Small Size Conveyor Chain

Corrosion Resistant Small Size Conveyor Chain

Plus α Small Size Conveyor Chain

High Precision Conveyor Chain

Engineering Manual



Base Chain Dimensions

Tsubaki Chain No.	Roller Type	Pitch P	Roller Dia.		Width Between Inner Link Plates W	Pin			Offset Pin Length L	Plate		Approx. Mass kg/m		No. of Links per Unit
			S Roller R1	R Roller R2		Dia. D	L1	L2		Thickness T	Width H	Steel		
												S Roller	R Roller	
RF2040	S · R	25.40	7.92	15.88	7.95	3.97	8.25	9.95	18.2	1.5	12.0	0.51	0.87	120
RF2050		31.75	10.16	19.05	9.53	5.09	10.30	12.0	22.6	2.0	15.0	0.84	1.30	96
RF2060		38.10	11.91	22.23	12.70	5.96	14.55	16.55	31.5	3.2	17.2	1.51	2.19	80
RF2080		50.80	15.88	28.58	15.88	7.94	18.30	20.90	39.9	4.0	23.0	2.41	3.52	60
RF2100		63.50	19.05	39.69	19.05	9.54	21.80	24.50	47.5	4.8	28.6	3.54	5.80	48
RF2120		76.20	22.23	44.45	25.40	11.11	26.95	30.55	59.0	5.6	34.4	5.08	8.13	40
RF2160		101.60	28.58	57.15	31.75	14.29	33.95	38.45	74.1	7.15	48.2	8.96	13.70	30

Chain strength: Please see pages 91 and 92.

Attachment Dimensions

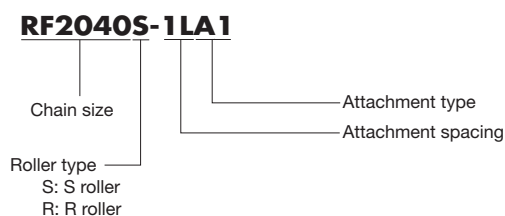
Tsubaki Chain No.	Roller Type	Pitch P'	C	C1	C2	K	N	O	O1	S
RF2040	S · R	Contact a Tsubakimoto representative for details.	12.7	11.1	13.6	9.5	19.1	3.6	5.2	9.1
RF2050			15.9	14.3	15.9	11.9	23.8	5.2	6.8	11.1
RF2060			21.45	17.5	19.1	14.3	28.6	5.2	8.7	14.7
RF2080			27.8	22.2	25.4	19.1	38.1	6.8	10.3	19.1
RF2100			33.35	28.6	31.8	23.8	47.6	8.7	14.3	23.4
RF2120			39.7	33.3	37.3	28.6	57.2	14	16	27.8
RF2160			52.4	44.5	50.8	38.1	76.2	18	22	36.5

Tsubaki Chain No.	X	X2	XS	D	L3	L4	G	Additional Weight per Attachment kg		
								A, SA	K, SK	EP
RF2040	19.3	17.6	19.8	3.97	9.5	16.75	4.1	0.003	0.006	0.001
RF2050	24.2	22.0	24.6	5.09	11.9	21.0	5.1	0.006	0.012	0.002
RF2060	31.5	28.2	30.6	5.96	14.3	27.45	6.1	0.017	0.034	0.003
RF2080	40.7	36.6	40.5	7.94	19.1	35.5	8.1	0.032	0.064	0.007
RF2100	49.9	44.9	50.4	9.54	23.8	43.4	10.1	0.060	0.120	0.012
RF2120	60.7	54.4	59.9	—	—	—	—	0.100	0.200	—
RF2160	77.8	70.0	78.6	—	—	—	—	0.203	0.400	—

Operating Temperature Range: -10°C to 150°C

Use a lubricant suited to the operating temperature. (See page 101, table 14.)

Chain Numbering



Standard
Small Size Conveyor Chain

Special
Small Size Conveyor Chain

Lube-Free
Small Size Conveyor Chain

Corrosion Resistant
Small Size Conveyor Chain

Plus α
Small Size Conveyor Chain

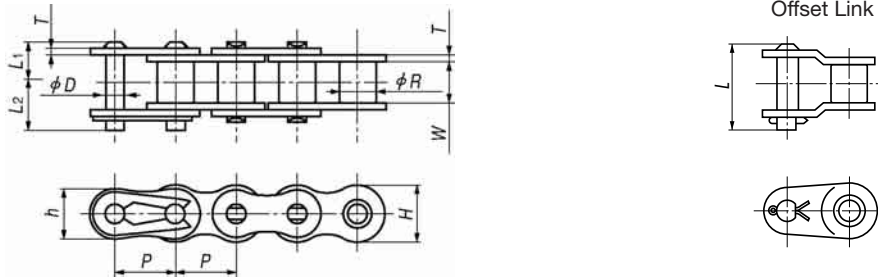
High Precision
Conveyor Chain

Engineering Manual

RS® Attachment Chain

RS Attachment Chain is used for short conveyors (usually less than 10 m) of small products. This chain is also suitable for low-noise environments.

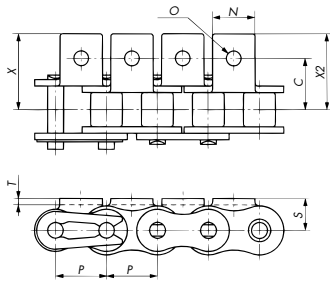
Base Chain



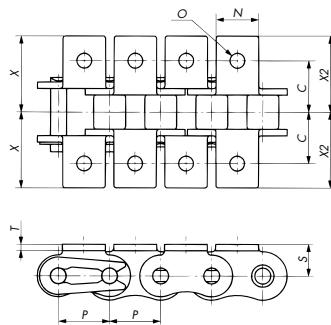
- Connecting links: RS25 to RS60 use spring clips. RS80 and larger use cotter pins. Base chain pins are riveted.

Attachments

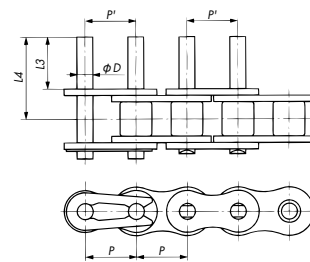
A1 Attachment



K1 Attachment

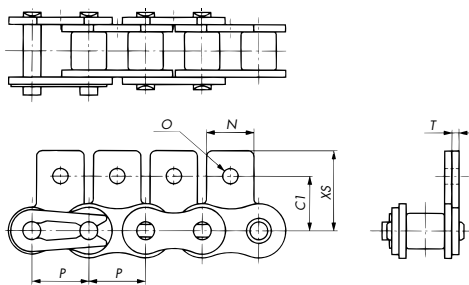


EP Attachment

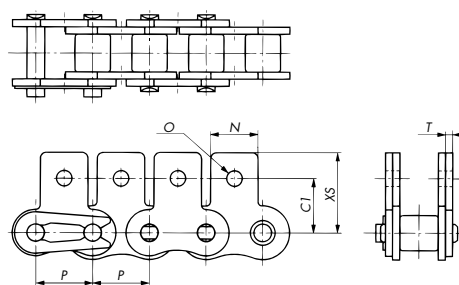


- Actual dimension P' may differ from P. Please contact a Tsubakimoto representative for details.

SA1 Attachment



SK1 Attachment



- Pins other than those on connecting links are riveted regardless of whether attachments are present.
- The drawings above show attachments added on every link.

Note: RS sprockets can be used. Please refer to separate Tsubaki Drive Chain catalog for information on RS sprockets.



Standard
Small Size Conveyor Chain

Special
Small Size Conveyor Chain

Lube Free
Small Size Conveyor Chain

Corrosion Resistant
Small Size Conveyor Chain

Plus α
Small Size Conveyor Chain

High Precision
Conveyor Chain

Engineering Manual



Base Chain Dimensions

Tsubaki Chain No.	Pitch P	P'	Roller Dia. (Bush) R	Width Between Inner Link Plates W	Plate			Pin				Approx. Mass kg/m	No. of Links per Unit
					Thickness T	Width H	Width h	Dia. D	L ₁	L ₂	L		
RS25	6.35	Contact a Tsubakimoto representative for details.	(3.30)	3.18	0.75	5.84	5.05	2.31	3.80	4.8	—	0.14	160
RS35	9.525		(5.08)	4.78	1.25	9.0	7.8	3.59	5.85	6.85	13.5	0.33	320
RS40	12.70		7.92	7.95	1.5	12.0	10.4	3.97	8.25	9.95	18.2	0.64	240
RS50	15.875		10.16	9.53	2.0	15.0	13.0	5.09	10.3	12.0	22.6	1.04	192
RS60	19.05		11.91	12.70	2.4	18.1	15.6	5.96	12.85	14.75	28.2	1.53	160
RS80	25.40		15.88	15.88	3.2	24.1	20.8	7.94	16.25	19.25	36.6	2.66	120
RS100	31.75		19.05	19.05	4.0	30.1	26.0	9.54	19.75	22.85	43.7	3.99	96
RS120	38.10		22.23	25.40	4.8	36.2	31.2	11.11	24.90	28.90	55.0	5.93	80
RS140	44.45		25.40	25.40	5.6	42.2	36.4	12.71	26.90	31.70	59.5	7.49	68
RS160	50.80		28.58	31.75	6.4	48.2	41.6	14.29	31.85	36.85	70.2	10.10	60

Chain strength: Please see pages 91 and 92.

Attachment Dimensions

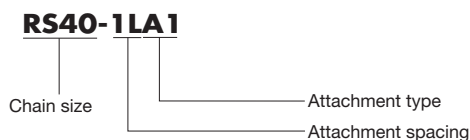
Tsubaki Chain No.	C	C1	N	O	S	T	X	X2	XS	D	L3	L4	Additional Weight per Attachment kg		
													A, SA	K, SK	EP
RS25	7.15	7.95	5.6	3.4	4.75	0.75	10.7	10.7	11.65	2.31	6.0	9.3	0.0003	0.0006	—
RS35	9.5	9.5	7.9	3.4	6.35	1.25	14.3	14.3	14.55	3.59	9.5	14.6	0.0008	0.0016	0.001
RS40	12.7	12.7	9.5	3.6	8.0	1.5	17.8	17.8	17.40	3.97	9.5	16.75	0.002	0.004	0.001
RS50	15.9	15.9	12.7	5.2	10.3	2.0	23.4	23.4	23.05	5.09	11.9	21.0	0.003	0.006	0.002
RS60	19.05	18.3	15.9	5.2	11.9	2.4	28.2	28.2	26.85	5.96	14.3	25.75	0.007	0.014	0.003
RS80	25.4	24.6	19.1	6.8	15.9	3.2	36.6	36.6	35.45	7.94	19.1	33.85	0.013	0.026	0.007
RS100	31.75	31.8	25.4	8.7	19.8	4.0	44.9	44.9	44.0	9.54	23.8	41.75	0.026	0.052	0.012
RS120	38.1	36.5	28.6	10.3	23.0	4.8	55.8	50.8	52.9	11.11	28.6	51.4	0.044	0.088	0.020
RS140	44.5	44.5	34.9	11.9	28.6	5.6	63.1	57.2	63.5	12.71	33.3	57.9	0.071	0.142	0.030
RS160	50.8	50.8	38.1	14.3	31.8	6.4	71.8	65.1	70.1	14.29	38.1	67.45	0.097	0.194	0.045

Note: Pin diameters for RS35 and RS35-LMC (Lambda) chain are different. The two cannot be combined.

Operating Temperature Range: -10°C to 150°C

Use a lubricant suited to the operating temperature. (See page 101, table 14.)

Chain Numbering



Standard
Small Size Conveyor Chain

Special
Small Size Conveyor Chain

Lube Free
Small Size Conveyor Chain

Corrosion Resistant
Small Size Conveyor Chain

Plus α
Small Size Conveyor Chain

High Precision
Conveyor Chain

Engineering Manual

Additional RS® Attachment Chains



Standard
Small Size Conveyor Chain

Special
Small Size Conveyor Chain

Lube Free
Small Size Conveyor Chain

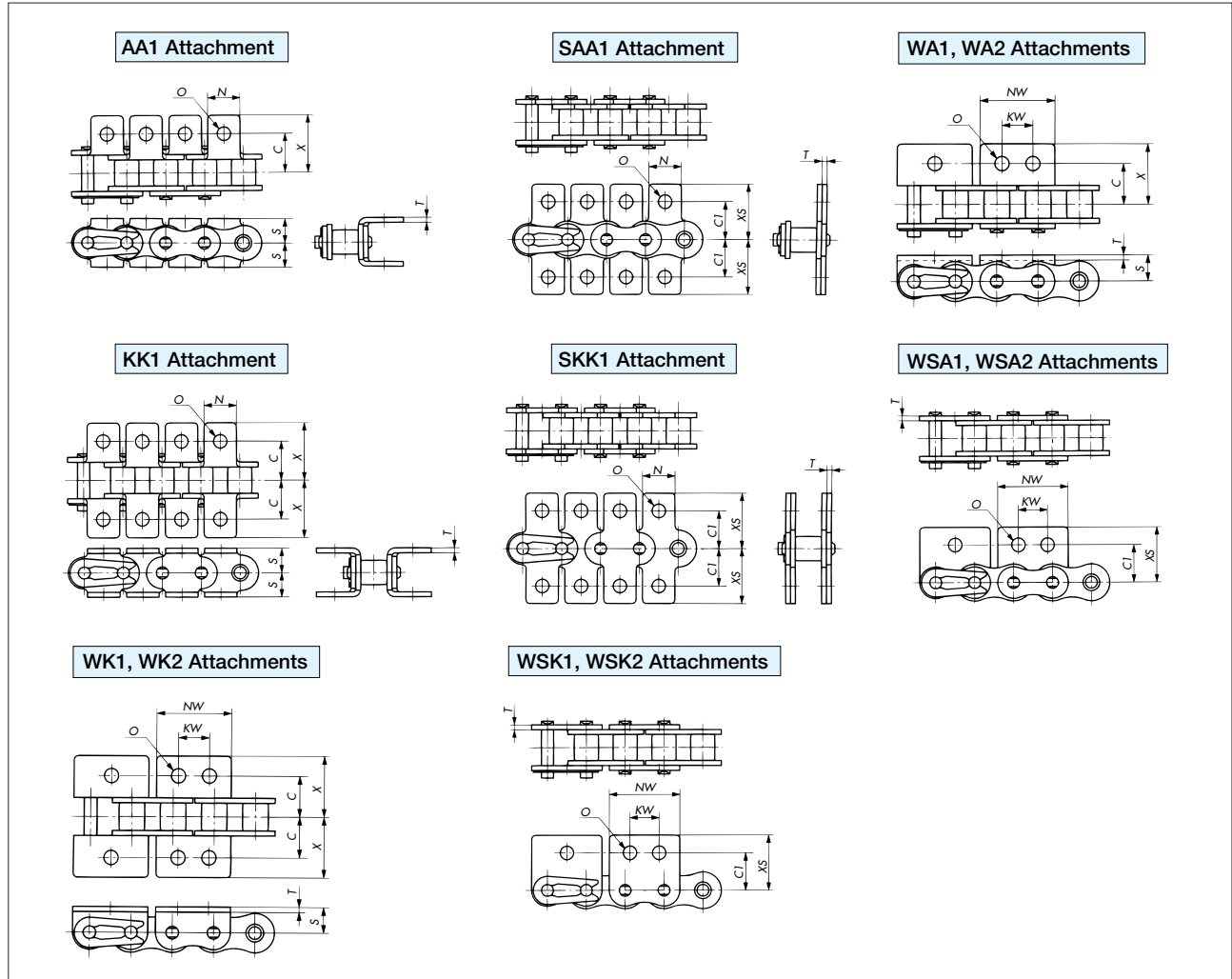
Corrosion Resistant
Small Size Conveyor Chain

Plus α
Small Size Conveyor Chain

High Precision
Conveyor Chain

Engineering Manual

Attachments



Attachment Dimensions

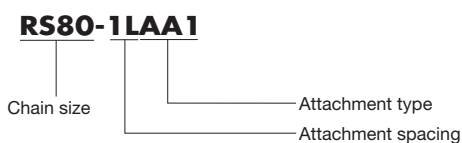
Tsubaki Chain No.	Pitch	C	C1	N	O	S	T	X	XS	NW (when on inner link; see Note 5 below)	KW	Additional Weight per Attachment kg				
												AA, SAA	KK, SKK	WA, WSA	WK, WSK	
RS40	12.70	12.7	12.7	9.5	4.5	8.0	1.5	17.8	17.4	23.0	24.7	9.5	0.003	0.006	0.003	0.006
RS50	15.875	15.9	15.9	12.7	5.5	10.3	2.0	23.4	23.05	28.8	30.9	11.9	0.006	0.012	0.007	0.014
RS60	19.05	19.05	18.3	15.9	6.6	11.9	2.4	28.2	26.85	34.6	37.2	14.3	0.011	0.022	0.012	0.024
RS80	25.40	25.4	24.6	19.1	9.0	15.9	3.2	36.6	35.45	46.1	49.5	19.1	0.023	0.046	0.028	0.056
RS100	31.75	31.75	31.8	25.4	11.0	19.8	4.0	44.9	44.0	57.7	61.9	23.8	0.048	0.096	0.055	0.110

- Note: 1. Base chain dimensions are the same as those of RS Attachment Chain.
 2. Connecting links: RS40 to RS60 use spring clips. RS80 and RS100 use cotter pins.
 3. Check sprocket hub dimensions to ensure that attachments AA, KK, SAA, and SKK will not make contact with the hub.
 4. Check clearances between AA and KK attachments to ensure that no contact occurs on curved sections of the conveyor path.
 5. In the table above, NW (when on inner link) refers to the case when attachments are provided on inner links.

Operating Temperature Range: -10°C to 150°C

Use a lubricant suited to the operating temperature. (See page 101, table 14.)

Chain Numbering



RF Roller Chain

RF Roller Chain is identical to RS Attachment Chain except that the link plates have flattened sides to allow conveyed materials to be placed directly on the chain.

Base Chain

• Connecting links: RF35 to RF60 use spring clips. RF80 and larger use cotter pins. • Offset links are not available.

Base Chain Dimensions

Tsubaki Chain No.	Pitch P	Roller Dia. R	Width Between Inner Link Plates W	Plate		Pin			Max. Allowable Load kN {kgf}	Approx. Mass kg/m	No. of Links per Unit
				Thickness T	Width H	Dia. D	L ₁	L ₂			
RF35	9.525	(5.08)	4.78	1.25	9.0	3.59	5.85	6.85	1.52{ 155}	0.41	320
RF40	12.70	7.92	7.95	1.5	12.0	3.97	8.25	9.95	2.65{ 270}	0.74	240
RF50	15.875	10.16	9.53	2.0	15.0	5.09	10.3	12.0	4.31{ 440}	1.22	192
RF60	19.05	11.91	12.70	2.4	18.1	5.96	12.85	14.75	6.28{ 640}	1.78	160
RF80	25.40	15.88	15.88	3.2	24.1	7.94	16.25	19.25	10.7{ 1090}	3.09	120
RF100	31.75	19.05	19.05	4.0	28.6	9.54	19.75	22.85	17.1{ 1740}	4.43	96
RF120	38.10	22.23	25.40	4.8	34.4	11.11	24.9	28.9	23.9{ 2440}	6.49	80

Note: Roller diameter R (in parentheses) for RF35 is the bush diameter.

Operating Temperature Range: -10°C to 150°C

Use a lubricant suited to the operating temperature. (See page 101, table 14.)

Chain Numbering

RF60

Chain size

- Stainless steel and Lambda chains are also available. Please consult a Tsubakimoto representative for more information.
- RS sprockets can be used. Please refer to separate Tsubaki Drive Chain catalog for information on RS sprockets.



Standard
Small Size Conveyor Chain

Special
Small Size Conveyor Chain

Lube Free
Small Size Conveyor Chain

Corrosion Resistant
Small Size Conveyor Chain

Plus α
Small Size Conveyor Chain

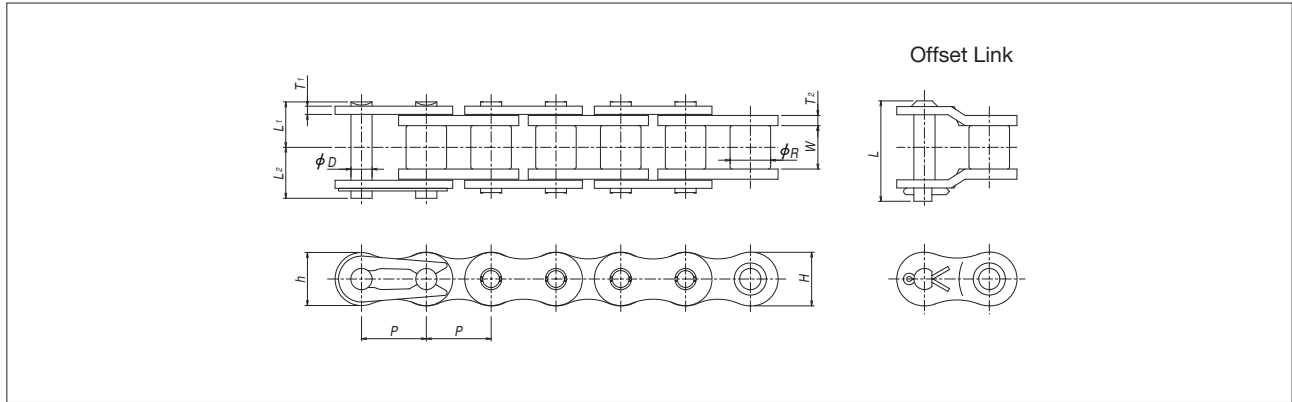
High Precision
Conveyor Chain

Engineering Manual

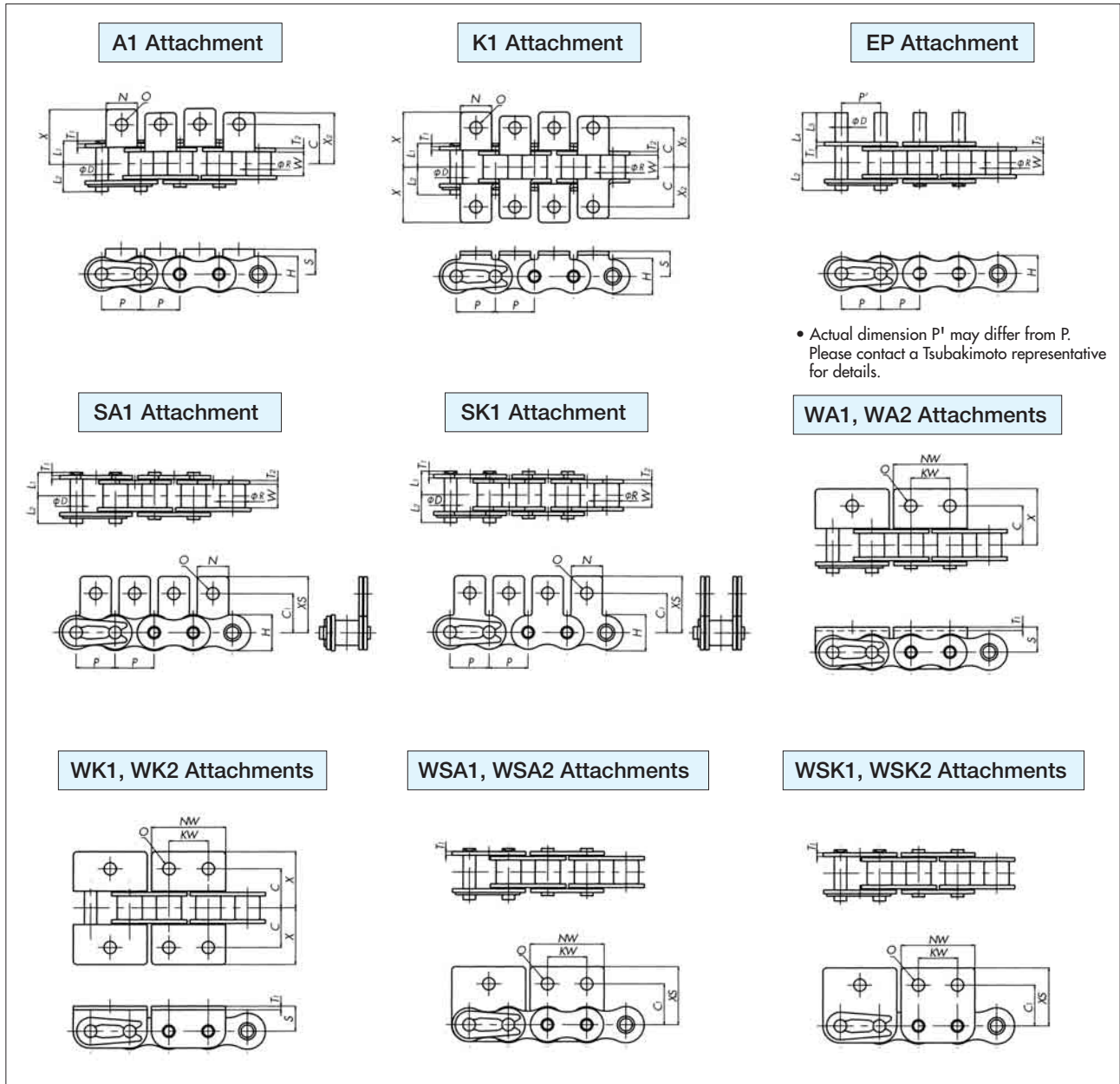
BS Attachment Chain

BS Attachment Chain conforms to ISO 606 "B" series standards. The dimensions are fully interchangeable with existing BS chains used in equipment manufactured in Europe, without the need to replace sprockets.

Base Chain



Attachments



Standard
Small Size Conveyor Chain

Special
Small Size Conveyor Chain

Lube Free
Small Size Conveyor Chain

Corrosion Resistant
Small Size Conveyor Chain

Plus α
Small Size Conveyor Chain

High Precision
Conveyor Chain

Engineering Manual



Base Chain Dimensions

Tsubaki Chain No.	ISO No.	Pitch <i>P</i>	Roller Dia. <i>R</i>	Width Between Inner Link Plates <i>W</i>	Plate			
					Thickness <i>T₂</i>	Thickness <i>T₁</i>	Width <i>H</i>	Width <i>h</i>
RS08B	08B	12.70	8.51	7.75	1.6	1.6	12.0	10.4
RS10B	10B	15.875	10.16	9.65	1.5	1.5	14.7	13.7
RS12B	12B	19.05	12.07	11.68	1.8	1.8	16.1	16.1
RS16B	16B	25.40	15.88	17.02	4.0	3.2	21.0	21.0

Tsubaki Chain No.	Pin				Min. Tensile Strength kN {kgf}	Approx. Mass kg/m	No. of Links per Unit
	Dia. <i>D</i>	<i>L₁</i>	<i>L₂</i>	<i>L</i>			
RS08B	4.45	8.4	10.0	18.6	12.9{1320}	0.70	240
RS10B	5.08	9.55	11.25	20.8	15.7{1600}	0.95	192
RS12B	5.72	11.1	13.0	24.4	22.1{2250}	1.25	160
RS16B	8.28	17.75	19.95	39.3	56.2{5730}	2.70	120

Attachment Dimensions

Tsubaki Chain No.	A1, SA1, K1, SK1 Attachments								Additional Weight per Attachment kg	
	<i>C</i>	<i>C1</i>	<i>N</i>	<i>O</i>	<i>S</i>	<i>X</i>	<i>X2</i>	<i>XS</i>	<i>A, SA</i>	<i>K, SK</i>
RS08B	11.9	12.7	11.4	4.2	8.9	19.05	17.15	19.3	0.002	0.004
RS10B	15.9	15.9	12.7	5.0	10.2	22.25	20.6	22.9	0.003	0.006
RS12B	19.05	22.2	16.5	7.1	13.5	29.85	27.8	32.05	0.006	0.012
RS16B	23.8	23.9	24.3	6.7	15.2	37.35	34.4	34.1	0.014	0.028

Tsubaki Chain No.	WA2, WSA2, WK2, WSK2 Attachments WA1, WSA1, WK1, WSK1 Attachments								EP Attachment				Additional Weight per Attachment kg		
	<i>C</i>	<i>C1</i>	<i>NW</i>	<i>O</i>	<i>S</i>	<i>X</i>	<i>XS</i>	<i>KW</i>	<i>P'</i>	<i>D</i>	<i>L3</i>	<i>L4</i>	<i>WA, WSA</i>	<i>WK, WSK</i>	<i>EP</i>
RS08B	12.7	13.1	24.6	4.9	8.9	20.3	20.7	12.7	Contact a Tsubakimoto representative for details.	4.45	9.5	17.0	0.005	0.010	0.001
RS10B	15.9	16.6	30.0	5.0	10.2	22.85	23.6	15.9		5.08	11.9	20.25	0.006	0.012	0.002
RS12B	17.45	17.6	34.8	5.5	11.4	25.65	25.75	19.1		5.72	14.3	24.1	0.009	0.018	0.003
RS16B	28.6	26.0	46.0	8.1	15.9	39.25	36.7	25.4		8.28	19.1	35.25	0.030	0.060	0.008

Operating Temperature Range: -10°C to 150°C

Use a lubricant suited to the operating temperature. (See page 101, table 14.)

Pin Shape

Single-strand chains in sizes RS08B through RS16B use easy disassembly pins (with center sink riveting). All other sizes, including multi-strand chains, use double stake riveting.

Sprockets

Use BS Roller Chain (ISO B Series) sprockets (made-to-order item).

Chain Selection

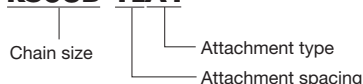
Please contact a Tsubakimoto representative regarding chain selection.

Special Orders

Tsubaki can manufacture special attachments and special extended pins, as well as RF06B, RS20B, and RS24B Attachment Chain having dimensions other than those given above. Please inquire for details.

Chain Numbering

RS08B-1LA1



Note: Stainless steel and Lambda chains are also available. Please consult a Tsubakimoto representative for more information.

Standard
Small Size Conveyor Chain

Special
Small Size Conveyor Chain

Lube Free
Small Size Conveyor Chain

Corrosion Resistant
Small Size Conveyor Chain

Plus α
Small Size Conveyor Chain

High Precision
Conveyor Chain

Engineering Manual

Hollow Pin Chain

In Hollow Pin Chain, the pin is made with a hole, enabling various attachments to be installed simply and easily. This type of chain is used for general-purpose conveyance.

Features:

1. Regardless of whether the chain is straight or wrapped around a sprocket, the center distance between attachments is always the same.
2. The load from the attachments is distributed equally to both sides of the link plates. This provides advantages in terms of strength, and the chain has less tendency to wind while running.
3. It is easy to replace attachments, do maintenance, or adjust attachment spacing even while the chain is installed on equipment.



Standard
Small Size Conveyor Chain

Special
Small Size Conveyor Chain

Lube Free
Small Size Conveyor Chain

Corrosion Resistant
Small Size Conveyor Chain

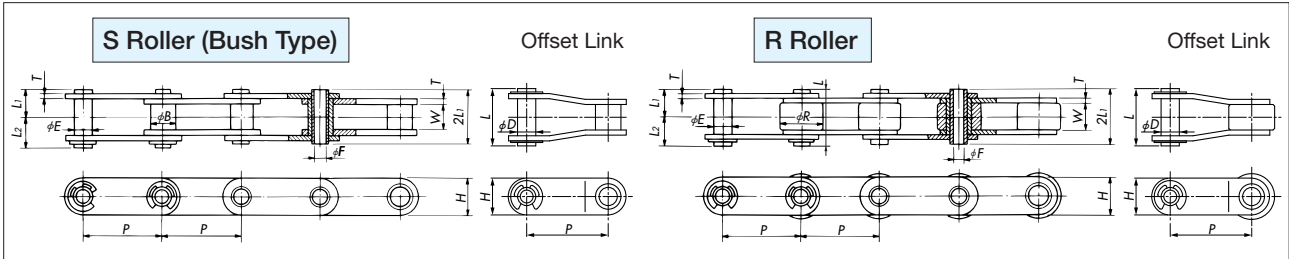
Plus α
Small Size Conveyor Chain

High Precision
Conveyor Chain

Engineering Manual

Hollow Pin Double Pitch Chain

Base Chain



Base Chain Dimensions

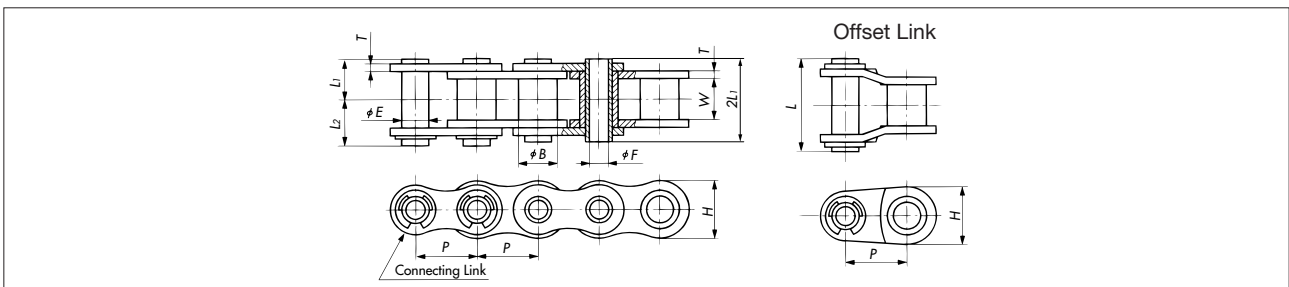
Tsubaki Chain No.	Roller Type	Pitch P	Bush Dia. B	Roller Dia. R	Width Between Inner Link Plates W	Plate		Pin			Offset Pin Length L	Approx. Mass kg/m		No. of Links per Unit	
						Thickness T	Width H	Outer Dia. E	Inner Dia. F (min.)	L ₁		L ₂	Bush Type		R Roller
RF2040-HP	S • R	25.40	7.92	15.88	7.95	1.5	12.0	5.68	4.00	8.00	9.50	19.1	0.46	0.82	120
RF2050-HP		31.75	10.16	19.05	9.53	2.0	15.0	7.22	5.12	10.05	11.65	23.4	0.75	1.21	96
RF2060-HP		38.10	11.91	22.23	12.70	2.4	17.2	8.38	5.99	12.55	14.25	28.7	1.38	2.06	80
RF2080-HP		50.80	15.88	28.58	15.88	3.2	23.0	11.375	8.02	16.25	17.80	35.7	1.80	2.81	60

Chain strength: Please see page 92.



Hollow Pin RS Chain

Base Chain



Base Chain Dimensions

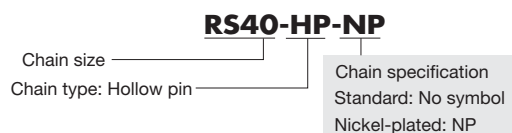
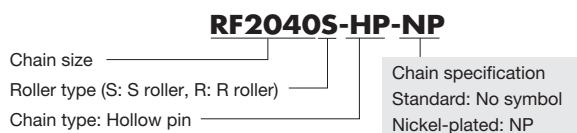
Tsubaki Chain No.	Pitch P	Bush Dia. B	Width Between Inner Link Plates W	Plate		Pin			Offset Pin Length L	Approx. Mass kg/m	No. of Links per Unit	
				Thickness T	Width H	Outer Dia. E	Inner Dia. F (min.)	L ₁				L ₂
RS40-HP	12.70	7.92	7.95	1.5	12.0	5.68	4.00	8.00	9.50	19.1	0.53	240
RS50-HP	15.875	10.16	9.53	2.0	15.0	7.22	5.12	10.05	11.65	23.4	0.86	192
RS60-HP	19.05	11.91	12.70	2.4	18.1	8.38	5.99	12.55	14.25	28.7	1.27	160
RS80-HP	25.40	15.88	15.88	3.2	24.1	11.375	8.02	16.25	17.80	35.7	2.15	120

Chain strength: Please see page 92.

Operating Temperature Range: -10°C to 150°C

Use a lubricant suited to the operating temperature. (See page 101, table 14.)

Chain Numbering

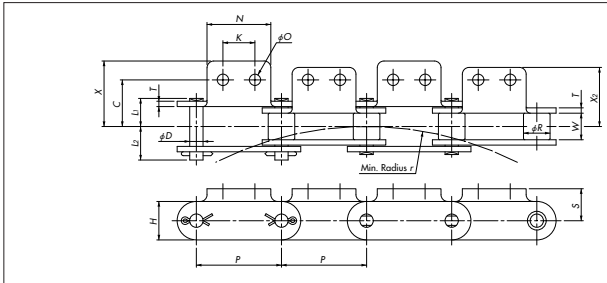


Curved Attachment Chain

Curved Attachment Chain has additional clearance between the pins and bushes to permit extra flexibility. Guide rails to control the chain enable it to be used for curved conveyance. This chain can be used for power transmission purposes, as well as conveyance when attachments are installed. (Contact a Tsubakimoto representative for details.)

Curved Double Pitch Chain

Base Chain and Attachments



- Drawing shows S roller chain. Dimensions are the same for R roller chain, excluding roller dimensions.
- When attachments are to be installed on each even-numbered link, attachments will be provided on inner links unless otherwise specified.

Chain Numbering

RF2040S-CU-1LA2

Chain size _____ Attachment type _____
 Roller type _____ Attachment spacing _____
 (S: S roller, R: R roller) Chain type: Curved

Base Chain Dimensions

Tsubaki Chain No.	Pitch P	Width Between Inner Link Plates W	Roller Dia. R		Plate		Pin			Min. Radius r	Max. Allowable Load kN {kgf}	Approx. Mass kg/m		No. of Links per Unit
			S Roller	R Roller	Thickness T	Width H	Dia. D	L1	L2			S Roller	R Roller	
RF2040-CU	25.40	7.95	7.92	15.88	1.5	12.0	3.97	8.45	9.75	700	1.86{190}	0.51	0.87	120
RF2050-CU	31.75	9.53	10.16	19.05	2.0	15.0	5.09	10.6	12.4	800	2.84{290}	0.84	1.30	96
RF2060-CU	38.10	12.70	11.91	22.23	2.4	17.2	5.96	13.25	15.05	1000	4.02{410}	1.22	1.90	80
RF2080-CU	50.80	15.88	15.88	28.58	3.2	23.0	7.94	16.75	20.05	1200	6.96{710}	2.02	3.13	60

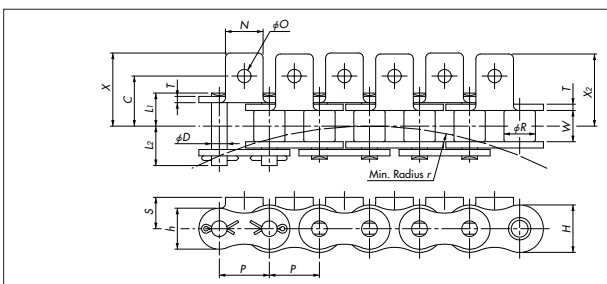
Chain strength: Please see page 92.

Attachment Dimensions

Tsubaki Chain No.	A1, K1, A2, K2 Attachments							Additional Weight per Attachment kg	
	C	K	N	O	S	X	X2	A	K
RF2040-CU	12.7	9.5	19.1	3.6	9.1	19.5	17.6	0.03	0.06
RF2050-CU	15.9	11.9	23.8	5.2	11.1	24.4	22.0	0.06	0.12
RF2060-CU	21.45	14.3	28.6	5.2	14.7	29.9	27.0	0.013	0.026
RF2080-CU	27.8	19.1	38.1	6.8	19.1	39.1	35.25	0.026	0.052

Curved RS Attachment Chain

Base Chain and Attachments



- When attachments are to be installed on each even-numbered link, attachments will be provided on inner links unless otherwise specified.

Chain Numbering

RS80-CU-1LA1

Chain size _____ Attachment type _____
 Chain type: Curved Attachment spacing _____

Base Chain Dimensions

Tsubaki Chain No.	Pitch P	Width Between Inner Link Plates W	Roller Dia. R	Plate			Pin			Min. Radius r	Max. Allowable Load kN {kgf}	Approx. Mass kg/m	No. of Links per Unit
				Thickness T	Width H	Width h	Dia. D	L1	L2				
RS40-CU	12.70	7.95	7.92	1.5	12.0	10.4	3.97	8.45	9.75	350	1.86{190}	0.61	240
RS50-CU	15.875	9.53	10.16	2.0	15.0	13.0	5.09	10.6	12.4	400	2.84{290}	1.01	192
RS60-CU	19.05	12.70	11.91	2.4	18.1	15.6	5.96	13.25	15.05	500	4.02{410}	1.40	160
RS80-CU	25.40	15.88	15.88	3.2	24.1	20.8	7.94	16.75	20.05	600	6.96{710}	2.47	120

Chain strength: Please see page 92.

Attachment Dimensions

Tsubaki Chain No.	A1, K1 Attachments						Additional Weight per Attachment kg	
	C	N	O	S	X	X2	A	K
RS40-CU	12.7	9.5	3.6	8.0	18.0	17.8	0.002	0.004
RS50-CU	15.9	12.7	5.2	10.3	23.7	23.4	0.003	0.006
RS60-CU	19.05	15.9	5.2	11.9	28.5	28.2	0.007	0.014
RS80-CU	25.4	19.1	6.8	15.9	37.1	36.6	0.013	0.026

Operating Temperature Range: -10°C to 150°C

Use a lubricant suited to the operating temperature. (See page 101, table 14.)

Standard
Small Size Conveyor Chain

Special
Small Size Conveyor Chain

Lube Free
Small Size Conveyor Chain

Corrosion Resistant
Small Size Conveyor Chain

Plus α
Small Size Conveyor Chain

High Precision
Conveyor Chain

Engineering Manual