

Polias para Potência Fracionária (FHP) em Estoque



AK / BK
Furadas sob Medida



AK / BK
com Bucha MST® (*Martin Split Taper*)



2AK / 2BK
Furadas sob Medida



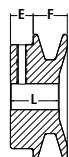
2AK / 2BK
com Bucha MST® (*Martin Split Taper*)

- Polias de potência fracionária para aplicações de serviço leve.
- Projetos de Canal Simples e Duplo.
- Furadas sob medida e com Bucha MST®.
- Canais usinados com precisão.
- Balanceadas estaticamente.

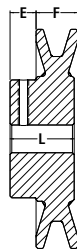
Ligue para a *Martin* para seus requerimentos de polias de fabricação especial ou de grandes quantidades.

AK

Polias de Canal Simples para Potência Fracionária (FHP) Furadas sob Medida

Martin

Tipo A
Sólida



Tipo B
Alma



Tipo C
Raios

Polea FHP — AK

Número de Parte	DE	Diâmetro de Passo		Tipo	Furos sob Medida em Estoque Inclui Rasgo de Chaveta e Opressor										F	E	Compr. Total (L)	Peso Kg (Aprox.)	
		Ref. A (4L) Correias	Correias 3L																
AK15	1.55	1.30	-	A	1/2	5/8									21/32	7/16	1-3/32	0,14	
AK17	1.75	1.50	1.16	A	1/2	5/8									21/32	7/16	15/16	0,14	
AK19	1.95	1.70	1.36	A	1/2	5/8	3/4	7/8							21/32	7/16	15/16	0,23	
AK20	2.00	1.80	1.46	A	1/2	5/8	3/4								21/32	7/16	15/16	0,23	
AK21	2.10	1.90	1.56	A	1/2	5/8	3/4								21/32	7/16	15/16	0,23	
AK22	2.20	2.00	1.66	A	1/2	5/8	3/4	7/8							21/32	7/16	15/16	0,27	
AK23	2.30	2.10	1.76	A	1/2	5/8	3/4								21/32	7/16	15/16	0,27	
AK24	2.40	2.20	1.86	A	1/2	5/8	3/4	7/8	1						21/32	7/16	15/16	0,27	
AK25	2.50	2.30	1.96	B	1/2	5/8	3/4	7/8							21/32	7/16	15/16	0,32	
AK26	2.60	2.40	2.06	B	1/2	5/8	3/4								21/32	7/16	15/16	0,32	
AK27	2.70	2.50	2.16	B	1/2	5/8	3/4		1						21/32	7/16	15/16	0,36	
AK28	2.80	2.60	2.26	B	1/2	5/8	3/4	7/8							21/32	7/16	15/16	0,36	
AK30	3.05	2.80	2.46	B	1/2	5/8	3/4	7/8	1						21/32	7/16	15/16	0,41	
AK32	3.25	3.00	2.66	B	1/2	5/8	3/4	7/8	1						21/32	7/16	15/16	0,45	
AK34	3.45	3.20	2.86	B	1/2	5/8	3/4	7/8	1						21/32	7/16	15/16	0,50	
AK35	3.55	3.30	2.96	B	1/2	5/8	3/4	7/8	1						21/32	7/16	15/16	0,54	
AK39	3.75	3.50	3.16	B	1/2	5/8	3/4	7/8	15/16	1					3/4	15/32	1-5/32	0,73	
AK41	3.95	3.70	3.36	B	1/2	5/8	3/4	7/8	15/16	1	1-1/8				3/4	15/32	1-5/32	0,73	
AK44	4.25	4.00	3.66	B	1/2	5/8	3/4	7/8	15/16	1	1-1/8				3/4	15/32	1-5/32	0,86	
AK46	4.45	4.20	3.86	B	1/2	5/8	3/4	7/8	15/16	1	1-1/8				3/4	15/32	1-5/32	0,91	
AK49	4.75	4.50	4.16	B	1/2	5/8	3/4	7/8	15/16	1	1-1/8				3/4	15/32	1-5/32	0,95	
AK51	4.95	4.70	4.36	B	1/2	5/8	3/4	7/8	15/16	1	1-1/8				3/4	15/32	1-5/32	1,00	
AK54	5.25	5.00	4.66	B	1/2	5/8	3/4	7/8	15/16	1	1-1/8	1-3/16			3/4	15/32	1-5/32	1,09	
AK56	5.45	5.20	4.86	B	1/2	5/8	3/4	7/8	15/16	1	1-1/8	1-3/16			3/4	15/32	1-5/32	1,13	
AK59	5.75	5.50	5.16	C	1/2	5/8	3/4	7/8	15/16	1	1-1/8	1-3/16			3/4	15/32	1-5/32	1,22	
AK61	5.95	5.70	5.36	C	1/2	5/8	3/4	7/8	15/16	1	1-1/8	1-3/16			3/4	15/32	1-5/32	1,27	
AK64	6.25	6.00	5.66	C	1/2	5/8	3/4	7/8	15/16	1	1-1/8	1-3/16			3/4	15/32	1-5/32	1,36	
AK66	6.45	6.20	5.86	C		5/8	3/4			1	1-1/8				3/4	15/32	1-5/32	1,36	
AK69	6.75	6.50	6.16	C			3/4			1	1-1/8				3/4	23/32	1-15/32	1,68	
AK71	6.95	6.70	6.36	C	1/2	5/8	3/4			1	1-1/8			1-7/16	3/4	23/32	1-15/32	1,95	
AK74	7.25	7.00	6.66	C	1/2	5/8	3/4		15/16	1	1-1/8	1-3/16	1-1/4		1-7/16	3/4	23/32 *	1-15/32	2,04
AK79	7.75	7.50	7.16	C			3/4			1	1-1/8			1-7/16	3/4	23/32	1-15/32	2,13	
AK81	7.95	7.70	7.36	C		5/8	3/4			1		1-3/16			3/4	23/32	1-15/32	2,13	
AK84	8.25	8.00	7.66	C	1/2	5/8	3/4		15/16	1		1-3/16		1-7/16	3/4	23/32 *	1-15/32	2,27	
AK89	8.75	8.50	8.16	C			3/4			1	1-1/8			1-7/16	3/4	23/32	1-15/32	2,36	
AK91	8.95	8.70	8.36	C			3/4			1					3/4	23/32	1-15/32	2,36	
AK94	9.25	9.00	8.66	C	1/2	5/8	3/4		15/16	1		1-3/16	1-1/4	1-7/16	3/4	23/32 *	1-15/32	2,49	
AK99	9.75	9.50	9.16	C			3/4			1				1-7/16	3/4	23/32 *	1-15/32	2,59	
AK104	10.25	10.00	9.66	C		5/8	3/4			1		1-3/16	1-1/4	1-3/8	1-7/16	3/4	23/32	1-15/32	2,68
AK109	10.75	10.50	10.16	C			3/4			1				1-3/8	1-7/16	3/4	23/32	1-15/32	2,77
AK114	11.25	11.00	10.66	C			3/4			1		1-3/16		1-7/16	3/4	23/32 *	1-15/32	3,04	
AK124	12.25	12.00	11.66	C		5/8	3/4			1		1-3/16	1-1/4	1-7/16	3/4	23/32 *	1-15/32	3,31	
AK134	13.25	13.00	12.66	C			3/4			1		1-3/16		1-7/16	3/4	23/32	1-15/32	3,72	
AK144	14.25	14.00	13.66	C			3/4			1		1-3/16		1-7/16	3/4	23/32	1-15/32	3,95	
AK154	15.25	15.00	14.66	C			3/4			1				1-7/16	3/4	23/32	1-15/32	4,40	
AK184	18.25	18.00	17.66	C			3/4			1		1-3/16		1-7/16	3/4	23/32	1-15/32	5,35	

E = 25/32" PARA TAMANHOS DE FURO <= 1"

Furo de 1/2": Opressor unicamente, sem rasgo de chaveta.

Dimensões em polegadas, peso em kilos.

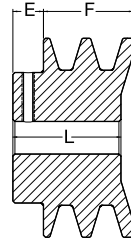


Polias de Canais Duplos para Potência Fracionária (FHP) Furadas sob Medida

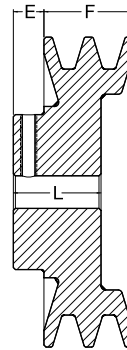
2AK

Dimensões de Rasgos de Chavetas Furo em polegadas

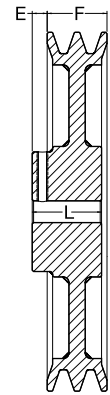
Diâmetro do Eixo	Larg. x Profundidade do Rasgo de Chaveta
1/2	NENHUM
5/8 - 7/8	3/16 x 3/32
15/16 - 1-1/4	1/4 x 1/8
1-5/16 - 1-3/8	5/16 x 5/32



Tipo A
Sólida



Tipo B
Alma



Tipo C
Ralos

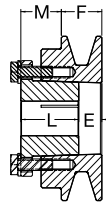
Polias FHP — 2AK

Número de parte	DE	Diâmetro de Passo		Tipo	Furos sob Medida em Estoque Inclui Rasgo de Chaveta e Opressor										F	E	Compr. Total (L)	Peso Kg (Aprox.)
		Ref. A (4L) Correias	Correias 3L															
2AK20	2.00	1.80	1.46	A	1/2	5/8	3/4								1-3/8	15/32	1-21/32	0.4
2AK21	2.15	1.90	1.56	A	1/2	5/8	3/4								1-3/8	15/32	1-21/32	0.4
2AK22	2.25	2.00	1.66	A	1/2	5/8	3/4	7/8		1					1-3/8	15/32	1-21/32	0.5
2AK23	2.35	2.10	1.76	A		5/8	3/4	7/8		1					1-3/8	15/32	1-21/32	0.5
2AK25	2.55	2.30	1.96	A		5/8	3/4	7/8		1					1-3/8	15/32	1-21/32	0.6
2AK26	2.65	2.40	2.06	A		5/8	3/4	7/8							1-3/8	15/32	1-21/32	0.7
2AK27	2.75	2.50	2.16	A		5/8	3/4	7/8		1					1-3/8	15/32	1-21/32	0.7
2AK28	2.85	2.60	2.26	A		5/8	3/4	7/8		1					1-3/8	15/32	1-21/32	0.8
2AK30	3.05	2.80	2.46	A	1/2	5/8	3/4	7/8		1	1-1/8				1-3/8	15/32	1-21/32	0.9
2AK32	3.25	3.00	2.66	A		5/8	3/4	7/8		1	1-1/8				1-3/8	15/32	1-21/32	1.0
2AK34	3.45	3.20	2.86	A		5/8	3/4	7/8		1	1-1/8				1-3/8	15/32	1-21/32	1.1
2AK39	3.75	3.50	3.16	B		5/8	3/4	7/8		1	1-1/8				1-3/8	15/32	1-11/32	1.2
2AK41	3.95	3.70	3.36	B		5/8	3/4	7/8		1	1-1/8				1-3/8	15/32	1-11/32	1.3
2AK44	4.25	4.00	3.66	B		5/8	3/4	7/8		1	1-1/8				1-3/8	15/32	1-11/32	1.5
2AK46	4.45	4.20	3.86	B		5/8		7/8		1	1-1/8				1-3/8	15/32	1-11/32	1.6
2AK49	4.75	4.50	4.16	B			3/4	7/8		1	1-1/8		1-3/8		1-3/8	15/32	1-11/32	1.9
2AK51	4.95	4.70	4.36	B			3/4	7/8		1	1-1/8		1-3/8		1-3/8	15/32	1-11/32	2.0
2AK54	5.25	5.00	4.66	B		5/8	3/4	7/8		1	1-1/8		1-3/8		1-3/8	15/32	1-11/32	1.9
2AK56	5.45	5.20	4.86	B		5/8	3/4			1	1-1/8		1-3/8		1-3/8	15/32	1-11/32	1.9
2AK59	5.75	5.50	5.16	B						1	1-1/8		1-3/8		1-3/8	15/32	1-11/32	2.0
2AK61	5.95	5.70	5.36	B			3/4	7/8		1	1-1/8		1-3/8		1-3/8	15/32	1-11/32	2.0
2AK64	6.25	6.00	5.66	C			3/4			1	1-1/8	1-3/16	1-3/8	1-7/16	1-3/8	11/32	1-19/32	2.5
2AK74	7.25	7.00	6.66	C			3/4			1	1-1/8	1-3/16	1-3/8	1-7/16	1-3/8	11/32	1-19/32	2.9
2AK84	8.25	8.00	7.66	C			3/4		15/16	1	1-1/8		1-3/8	1-7/16	1-3/8	11/32	1-19/32	3.3
2AK94	9.25	9.00	8.66	C			3/4	7/8		1	1-1/8	1-3/16	1-3/8	1-7/16	1-3/8	11/32	1-19/32	3.6
2AK104	10.25	10.00	9.66	C			3/4		15/16	1		1-3/16		1-7/16	1-3/8	11/32	1-19/32	4.1
2AK114	11.25	11.00	10.66	C						1		1-3/16	1-3/8	1-7/16	1-3/8	11/32	1-19/32	4.4
2AK124	12.25	12.00	11.66	C						1		1-3/16		1-7/16	1-3/8	11/32	1-19/32	4.8
2AK134	13.25	13.00	12.66	C								1-3/16		1-7/16	1-3/8	11/32	1-19/32	5.8
2AK144	14.25	14.00	13.66	C						1				1-7/16	1-3/8	11/32	1-19/32	5.9
2AK154	15.25	15.00	14.66	C								1-3/16		1-7/16	1-3/8	11/32	1-19/32	6.5
2AK184	18.25	18.00	17.66	C								1-3/16		1-7/16	1-3/8	11/32	1-19/32	7.8

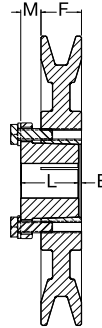
Furo de 1/2": Opressor unicamente, sem rasgo de chaveta.
Dimensões em polegadas, peso em kilos.

AK-H

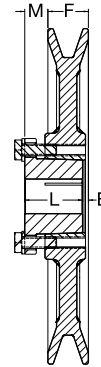
Polias de Canal Simples para Potência Fracionária (FHP) com Bucha MST®



Tipo A
Sólida



Tipo B
Alma



Type C
Raios

Polias FHP — AK-H

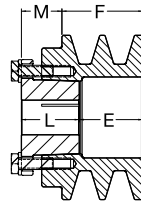
Número de Parte	DE	Diâmetro de Passo		Tipo	Bucha	Furo Máximo da Bucha	F	E	Compr. Total L	M	Peso sem Bucha Kg
		Ref. Correias A (4L)	Correias 3L								
AK30-H	3.05	2.80	2.46	A	H	1-1/2	3/4	3/8	1-1/4	7/8	0.6
AK32-H	3.25	3.00	2.66	A	H	1-1/2	3/4	3/8	1-1/4	7/8	0.6
AK34-H	3.45	3.20	2.86	A	H	1-1/2	3/4	1/16	1-1/4	9/16	0.5
AK39-H	3.75	3.50	3.16	A	H	1-1/2	3/4	1/16	1-1/4	9/16	0.6
AK41H	3.95	3.70	3.36	A	H	1-1/2	3/4	1/16	1-1/4	9/16	0.7
AK44-H	4.25	4.00	3.66	A	H	1-1/2	3/4	1/16	1-1/4	9/16	0.9
AK46-H	4.45	4.20	3.86	A	H	1-1/2	3/4	1/16	1-1/4	9/16	1.0
AK49-H	4.75	4.50	4.16	B	H	1-1/2	3/4	1/16	1-1/4	9/16	1.0
AK51H	4.95	4.70	4.36	B	H	1-1/2	3/4	1/16	1-1/4	9/16	1.0
AK54-H	5.25	5.00	4.66	B	H	1-1/2	3/4	1/16	1-1/4	9/16	1.0
AK56-H	5.45	5.20	4.86	B	H	1-1/2	3/4	1/16	1-1/4	9/16	1.1
AK59-H	5.75	5.50	5.16	B	H	1-1/2	3/4	1/16	1-1/4	9/16	1.1
AK61H	5.95	5.70	5.36	C	H	1-1/2	3/4	1/16	1-1/4	9/16	1.2
AK64-H	6.25	6.00	5.66	C	H	1-1/2	3/4	1/16	1-1/4	9/16	1.3
AK66-H	6.45	6.20	5.86	C	H	1-1/2	3/4	1/16	1-1/4	9/16	1.3
AK69-H	6.75	6.50	6.16	C	H	1-1/2	3/4	1/16	1-1/4	9/16	1.4
AK71H	6.95	6.70	6.36	C	H	1-1/2	3/4	1/16	1-1/4	9/16	1.4
AK74-H	7.25	7.00	6.66	C	H	1-1/2	3/4	1/16	1-1/4	9/16	1.5
AK79-H	7.75	7.50	7.16	C	H	1-1/2	3/4	1/16	1-1/4	9/16	1.6
AK84-H	8.25	8.00	7.66	C	H	1-1/2	3/4	1/16	1-1/4	9/16	1.7
AK89-H	8.75	8.50	8.16	C	H	1-1/2	3/4	1/16	1-1/4	9/16	1.8
AK94-H	9.25	9.00	8.66	C	H	1-1/2	3/4	1/16	1-1/4	9/16	2.0
AK99-H	9.75	9.50	9.16	C	H	1-1/2	3/4	1/16	1-1/4	9/16	2.1
AK104-H	10.25	10.00	9.66	C	H	1-1/2	3/4	1/16	1-1/4	9/16	2.3
AK109-H	10.75	10.50	10.16	C	H	1-1/2	3/4	1/16	1-1/4	9/16	2.4
AK114-H	11.25	11.00	10.66	C	H	1-1/2	3/4	1/16	1-1/4	9/16	2.5
AK124-H	12.25	12.00	11.66	C	H	1-1/2	3/4	1/16	1-1/4	9/16	2.7
AK134-H	13.25	13.00	12.66	C	H	1-1/2	3/4	1/16	1-1/4	9/16	3.3
AK144-H	14.25	14.00	13.66	C	H	1-1/2	3/4	1/16	1-1/4	9/16	3.6
AK154-H	15.25	15.00	14.66	C	H	1-1/2	3/4	1/16	1-1/4	9/16	4.0
AK184-H	18.25	18.00	17.66	C	H	1-1/2	3/4	1/16	1-1/4	9/16	5.2

O peso não inclui a bucha. Na página D-204 encontrará as dimensões das buchas.
Dimensões em polegadas, peso em kilos.

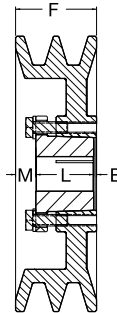


Polias de Canais Duplos para Potência Fracionária (FHP) com Bucha MST®

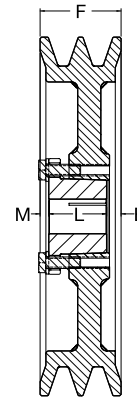
2AK-H



Tipo A Sólida



Tipo B Alma



Tipo C Raios

Polias FHP — 2AK-H

Número de Parte	DE	Diâmetro de Passo		Tipo	Bucha	Furo Máximo da Bucha	F	E	Compr. Total L	M	Peso sem Bucha Kg
		Ref. Correias A (4L)	Correias 3L								
2AK30-H	3.05	2.80	2.46	A	H	1-1/2	1-3/8	1	1-1/4	7/8	0.8
2AK32-H	3.25	3.00	2.66	A	H	1-1/2	1-3/8	1	1-1/4	7/8	0.9
2AK34-H	3.45	3.20	2.86	A	H	1-1/2	1-3/8	9/16	1-1/4	7/16	0.8
2AK39-H	3.75	3.50	3.16	A	H	1-1/2	1-3/8	9/16	1-1/4	7/16	0.9
2AK41-H	3.95	3.70	3.36	B	H	1-1/2	1-3/8	1/16	1-1/4	1/16	1.0
2AK44-H	4.25	4.00	3.66	B	H	1-1/2	1-3/8	1/16	1-1/4	1/16	1.2
2AK46-H	4.45	4.20	3.86	B	H	1-1/2	1-3/8	1/16	1-1/4	1/16	1.4
2AK49-H	4.75	4.50	4.16	B	H	1-1/2	1-3/8	1/16	1-1/4	1/16	1.4
2AK51-H	4.95	4.70	4.36	B	H	1-1/2	1-3/8	1/16	1-1/4	1/16	1.6
2AK54-H	5.25	5.00	4.66	B	H	1-1/2	1-3/8	1/16	1-1/4	1/16	1.5
2AK56-H	5.45	5.20	4.86	B	H	1-1/2	1-3/8	1/16	1-1/4	1/16	1.6
2AK59-H	5.75	5.50	5.16	C	H	1-1/2	1-3/8	1/16	1-1/4	1/16	1.5
2AK61-H	5.95	5.70	5.36	C	H	1-1/2	1-3/8	1/16	1-1/4	1/16	1.7
2AK64-H	6.25	6.00	5.66	C	H	1-1/2	1-3/8	1/16	1-1/4	1/16	1.8
2AK74-H	7.25	7.00	6.66	C	H	1-1/2	1-3/8	1/16	1-1/4	1/16	2.3
2AK84-H	8.25	8.00	7.66	C	H	1-1/2	1-3/8	1/16	1-1/4	1/16	2.5
2AK94-H	9.25	9.00	8.66	C	H	1-1/2	1-3/8	1/16	1-1/4	1/16	2.9
2AK104-H	10.25	10.00	9.66	C	H	1-1/2	1-3/8	1/16	1-1/4	1/16	3.4
2AK114-H	11.25	11.00	10.66	C	H	1-1/2	1-3/8	1/16	1-1/4	1/16	3.8
2AK124-H	12.25	12.00	11.66	C	H	1-1/2	1-3/8	1/16	1-1/4	1/16	4.2
2AK134-H	13.25	13.00	12.66	C	H	1-1/2	1-3/8	1/16	1-1/4	1/16	5.2
2AK144-H	14.25	14.00	13.66	C	H	1-1/2	1-3/8	1/16	1-1/4	1/16	5.4
2AK154-H	15.25	15.00	14.66	C	H	1-1/2	1-3/8	1/16	1-1/4	1/16	6.0
2AK184-H	18.25	18.00	17.66	C	H	1-1/2	1-3/8	1/16	1-1/4	1/16	7.7

O peso não inclui a bucha. Na página D-204 encontrará as dimensões das buchas.
Dimensões em polegadas, peso em kilos.

Buchas MST "H" – Furo em Polegadas

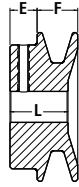
Diâmetro do Eixo	Larg. x Profundidade do Rasgo de Chaveta	Diâmetro do Eixo	Larg. x Profundidade do Rasgo de Chaveta	Diâmetro do Eixo	Larg. x Profundidade do Rasgo de Chaveta
3/8	NENHUM	3/4	3/16 x 3/32	1-1/8	1/4 x 1/8
7/16	NENHUM	25/32	3/16 x 3/32	1-3/16	1/4 x 1/8
1/2	1/8 x 1/16	13/16	3/16 x 3/32	1-1/4	1/4 x 1/8
9/16	1/8 x 1/16	7/8	3/16 x 3/32	1-5/16	5/16 x 1/16
19/32	1/8 x 1/16	15/16	1/4 x 1/8	1-3/8	5/16 x 1/16
5/8	3/16 x 3/32	31/32	1/4 x 1/8	1-3/8	3/8 x 1/16
21/32	3/16 x 3/32	1	1/4 x 1/8	1-7/16	3/8 x 1/16
11/16	3/16 x 3/32	1-1/16	1/4 x 1/8	1-1/2	3/8 x 1/32

Buchas MST "H" – Furo Milimétrico

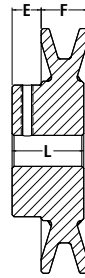
Diâmetro do Eixo	Larg. x Profundidade do Rasgo de Chaveta	Diâmetro do Eixo	Larg. x Profundidade do Rasgo de Chaveta
10	NENHUM	24	8 x 3.3
11	NENHUM	25	8 x 3.3
12	NENHUM	28	8 x 3.3
14	5 x 2.3	30	8 x 3.3
16	5 x 2.3	32	10 x 1.3
18	6 x 2.8	35	10 x 0.3
19	6 x 2.8	36	10 x 1.3
20	6 x 2.8	38	10 x 0.3
22	6 x 2.8		

BK

Polias de Canal Simples para Potência Fracionária (FHP) Furadas sob Medida



Tipo A
Sólida



Tipo B
Alma



Tipo C
Ralos

Polias FHP — BK

Número de Parte	DE	Diâmetro de Passo		Tipo	Furos sob Medida em Estoque Inclui Rasgo de Chaveta e Opressor										F	E	Compr. Total L	Peso Kg (Aprox.)	
		Ref. Correias A (4L)	Ref. Correias 3L																
BK23	2.30	-	2.10	A						1						13/16	13/32	1-1/16	0.2
BK24	2.40	1.80	2.20	A	1/2	5/8	3/4	7/8								13/16	13/32	1-1/16	0.2
BK25	2.50	1.90	2.30	A	1/2	5/8	3/4	7/8								13/16	13/32	1-1/16	0.2
BK26	2.60	2.00	2.40	A	1/2	5/8	3/4	7/8								13/16	13/32	1-1/16	0.3
BK27	2.70	2.10	2.50	B	1/2	5/8	3/4	7/8			1-1/8					13/16	13/32	1-1/16	0.3
BK28	2.95	2.20	2.60	B	1/2	5/8	3/4	7/8		1	1-1/8					13/16	13/32	1-1/16	0.4
BK30	3.15	2.40	2.80	B	1/2	5/8	3/4	7/8		1	1-1/8					13/16	13/32	1-1/16	0.4
BK32	3.35	2.60	3.00	B	1/2	5/8	3/4	7/8		1						13/16	13/32	1-1/16	0.4
BK34	3.55	2.80	3.20	B	1/2	5/8	3/4	7/8		1	1-1/8					7/8	13/32	1-5/32	0.6
BK36	3.75	3.00	3.40	B	1/2	5/8	3/4	7/8		1	1-1/8					7/8	13/32	1-5/32	0.7
BK40	3.95	3.20	3.60	B	1/2	5/8	3/4	7/8		1	1-1/8					7/8	13/32	1-5/32	0.7
BK45	4.25	3.50	3.90	B	1/2	5/8	3/4	7/8		1	1-1/8					7/8	13/32	1-5/32	0.8
BK46	4.35	3.60	4.00	B				7/8								7/8	13/32	1-5/32	0.8
BK47	4.45	3.70	4.10	B	1/2	5/8	3/4	7/8		1	1-1/8					7/8	13/32	1-5/32	0.8
BK48	4.55	3.80	4.20	B	1/2	5/8	3/4	7/8			1-1/8					7/8	13/32	1-5/32	0.9
BK50	4.75	4.00	4.40	B	1/2	5/8	3/4	7/8	15/16	1	1-1/8					7/8	13/32	1-5/32	0.9
BK52	4.95	4.20	4.60	B	1/2	5/8	3/4	7/8		1	1-1/8					7/8	13/32	1-5/32	0.9
BK55	5.25	4.50	4.90	B	1/2	5/8	3/4	7/8		1	1-1/8	1-3/16				7/8	13/32	1-5/32	1.0
BK57	5.45	4.70	5.10	B				7/8	15/16	1	1-1/8					7/8	13/32	1-5/32	1.0
BK60	5.75	5.00	5.40	B	1/2	5/8	3/4	7/8		1	1-1/8	1-3/16				7/8	13/32	1-5/32	1.0
BK62	5.95	5.20	5.60	B	1/2	5/8	3/4	7/8	15/16	1	1-1/8	1-3/16				7/8	13/32	1-5/32	1.1
BK65	6.25	5.50	5.90	B				7/8		1	1-1/8					7/8	13/32	1-5/32	1.2
BK67	6.45	5.70	6.10	C				7/8		1	1-1/8					7/8	13/32	1-5/32	1.3
BK70	6.75	6.00	6.40	C				7/8	15/16	1	1-1/8	1-3/16				7/8	21/32*	1-15/32	1.5
BK72	6.95	6.20	6.60	C				3/4		1	1-1/8			1-3/8	1-7/16	7/8	21/32	1-15/32	1.8
BK75	7.25	6.50	6.90	C				3/4		1	1-1/8				1-7/16	7/8	21/32	1-15/32	1.8
BK77	7.45	6.70	7.10	C				3/4		1	1-1/8			1-3/8	1-7/16	7/8	21/32	1-15/32	1.9
BK80	7.75	7.00	7.40	C			5/8	3/4	7/8	1	1-1/8	1-3/16	1-1/8	1-3/8	1-7/16	7/8	21/32	1-15/32	2.0
BK85	8.25	7.50	7.90	C				3/4		1	1-1/8	1-3/16		1-3/8	1-7/16	7/8	21/32	1-15/32	2.3
BK90	8.75	8.00	8.40	C				3/4	7/8	15/16	1	1-1/8	1-3/16	1-3/8	1-7/16	7/8	21/32	1-15/32	2.3
BK95	9.25	8.50	8.90	C				3/4		1	1-1/8			1-3/8	1-7/16	7/8	21/32	1-15/32	2.4
BK100	9.75	9.00	9.40	C				3/4	7/8	1	1-1/8	1-3/16	1-1/8	1-3/8	1-7/16	7/8	21/32	1-15/32	2.5
BK105	10.25	9.50	9.90	C						1				1-3/8	1-7/16	7/8	21/32	1-15/32	2.6
BK110	10.75	10.00	10.40	C				3/4		1	1-1/8	1-3/16		1-3/8	1-7/16	7/8	21/32	1-15/32	2.9
BK115	11.25	10.50	10.90	C						1				1-3/8	1-7/16	7/8	21/32	1-15/32	3.1
BK120	11.75	11.00	11.40	C				3/4		1		1-3/16		1-3/8	1-7/16	7/8	21/32	1-15/32	3.4
BK130	12.75	12.00	12.40	C				3/4	7/8	1	1-1/8	1-3/16			1-7/16	7/8	21/32	1-15/32	3.8
BK140	13.75	13.00	13.40	C				3/4		1		1-3/16			1-7/16	7/8	21/32	1-15/32	4.3
BK160	15.75	15.00	15.40	C						1	1-1/8	1-3/16	1-1/8		1-7/16	7/8	21/32	1-15/32	5.2
BK190	18.75	18.00	18.40	C						1		1-3/16	1-1/8		1-7/16	7/8	21/32	1-15/32	6.1

E = 13/32" PARA TAMANHOS DE FURO <= 1".
 Furo de 1/2": Opressor unicamente, sem rasgo de chaveta.
 Dimensões em polegadas, peso em kilos.

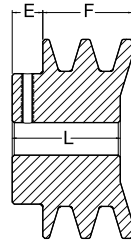


Polias de Canais Duplos para Potência Fracionária (FHP) Furadas sob Medida

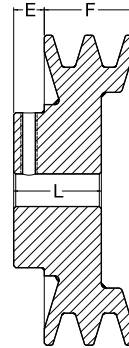
2BK

Diâmetro do Eixo	Larg. x Profundidade do Rasgo de Chaveta
1/2	NENHUM
5/8 - 7/8	3/16 x 3/32
15/16 - 1-1/4	1/4 x 1/8
1-5/16 - 1-3/8	5/16 x 5/32
1-7/16 - 1-3/4	3/8 x 3/16

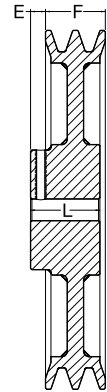
Dimensões de Rasgos de Chavetas
Furo em polegadas



Tipo A
Sólida



Tipo B
Alma



Tipo C
Raios

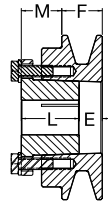
Polias FHP — 2BK

Número de Parte	DE	Diâmetro de Passo		Tipo	Furos sob Medida em Estoque Inclui Rasgo de Chaveta e Opressor								F	E	Compr. Total L	Peso Kg (Aprox.)	
		Ref. Correias A(4L)	Ref. Correias B(5L)		1/2	5/8	3/4	7/8	1	1-1/8	1-3/8	1-3/8					1-3/8
2BK25	2.50	1.90	2.30	A	1/2	5/8	3/4	7/8						1-3/4	15/32	1-31/32	0.6
2BK26	2.60	2.00	2.40	A		5/8		7/8		1-1/8				1-3/4	15/32	1-31/32	0.7
2BK27	2.70	2.10	2.50	A	1/2	5/8	3/4	7/8	1					1-3/4	15/32	1-31/32	0.7
2BK28	2.95	2.20	2.60	A	1/2	5/8	3/4	7/8	1	1-1/8				1-3/4	15/32	1-31/32	0.9
2BK30	3.15	2.40	2.80	A	1/2	5/8	3/4	7/8	1	1-1/8				1-3/4	15/32	1-31/32	1.0
2BK32	3.35	2.60	3.00	A		5/8		7/8	1	1-1/8				1-3/4	15/32	1-31/32	1.2
2BK34	3.55	2.80	3.20	A		5/8	3/4	7/8	1	1-1/8				1-3/4	15/32	1-31/32	1.3
2BK36	3.75	3.00	3.40	A			3/4	7/8	1	1-1/8		1-3/8		1-3/4	15/32	1-31/32	1.5
2BK40	3.95	3.20	3.60	B		5/8	3/4	7/8	1	1-1/8				1-3/4	15/32	1-15/32	1.5
2BK45	4.25	3.50	3.90	B					1	1-1/8		1-3/8		1-3/4	15/32	1-15/32	1.5
2BK47	4.45	3.70	4.10	B				7/8	1	1-1/8				1-3/4	15/32	1-15/32	1.7
2BK50	4.75	4.00	4.40	B			3/4		1	1-1/8		1-3/8		1-3/4	15/32	1-15/32	1.9
2BK52	4.95	4.20	4.60	B				7/8	1	1-1/8		1-3/8		1-3/4	15/32	1-15/32	2.0
2BK55	5.25	4.50	4.90	B						1-1/8		1-3/8		1-3/4	15/32	1-15/32	2.0
2BK57	5.45	4.70	5.10	B					1	1-1/8		1-3/8		1-3/4	15/32	1-15/32	2.3
2BK60	5.75	5.00	5.40	B			3/4	7/8	1	1-1/8		1-3/8		1-3/4	15/32	1-15/32	2.2
2BK62	5.95	5.20	5.60	B					1	1-1/8		1-3/8		1-3/4	15/32	1-15/32	2.2
2BK65	6.25	5.50	5.90	B					1	1-1/8		1-3/8		1-3/4	15/32	1-15/32	2.3
2BK67	6.45	5.70	6.10	C					1	1-1/8		1-3/8		1-3/4	15/32	1-15/32	2.3
2BK70	6.75	6.00	6.40	C			3/4		1	1-1/8	1-3/16	1-3/8	1-7/16	1-3/4	11/32	1-19/32	3.0
2BK80	7.75	7.00	7.40	C			3/4		1	1-1/8	1-3/16	1-3/8	1-7/16	1-3/4	11/32	1-19/32	3.3
2BK90	8.75	8.00	8.40	C			3/4		1	1-1/8	1-3/16	1-3/8	1-7/16	1-3/4	11/32	1-19/32	3.8
2BK100	9.75	9.00	9.40	C			3/4		1		1-3/16	1-3/8	1-7/16	1-3/4	11/32	1-19/32	4.3
2BK110	10.75	10.00	10.40	C					1		1-3/16		1-7/16	1-3/4	11/32	1-19/32	4.7
2BK120	11.75	11.00	11.40	C					1		1-3/16		1-7/16	1-3/4	11/32	1-19/32	5.4
2BK130	12.75	12.00	12.40	C					1		1-3/16		1-7/16	1-3/4	11/32	1-19/32	6.8
2BK140	13.75	13.00	13.40	C					1		1-3/16		1-7/16	1-3/4	11/32	1-19/32	7.4
2BK160	15.75	15.00	15.40	C					1		1-3/16		1-7/16	1-3/4	11/32	1-19/32	8.2
2BK190	18.75	18.00	18.40	C					1		1-3/16		1-7/16	1-3/4	11/32	1-19/32	10.6

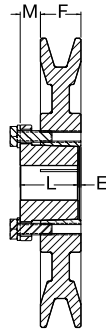
Furo de 1/2": Opressor unicamente, sem rasgo de chaveta.
Dimensões em polegadas, peso em kilos.

BK-H

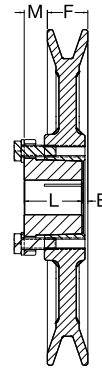
Polias de Canal Simples para Potência Fracionária (FHP) com Bucha MST®



Tipo A
Sólida



Tipo B
Alma



Tipo C
Raios

Polias FHP — BK-H

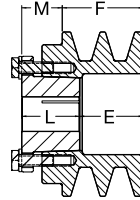
Número de Parte	DE	Diâmetro de Passo		Tipo	Bucha	Furo Máximo da Bucha	F	E	Compr. Total L	M	Peso sem Bucha Kg
		Ref. Correias A(4L)	Ref. Correias B(5L)								
BK30-H	3.15	2.40	2.80	A	H	1-1/2	7/8	1/2	1-1/4	7/8	0.6
BK32-H	3.35	2.60	3.00	A	H	1-1/2	7/8	1/2	1-1/4	7/8	0.7
BK34-H	3.55	2.80	3.20	A	H	1-1/2	7/8	1/2	1-1/4	7/8	0.8
BK36-H	3.75	3.00	3.40	B	H	1-1/2	7/8	1/16	1-1/4	7/16	0.6
BK40-H	3.95	3.20	3.60	B	H	1-1/2	7/8	1/16	1-1/4	7/16	0.7
BK45-H	4.25	3.50	3.90	B	H	1-1/2	7/8	1/16	1-1/4	7/16	0.9
BK47-H	4.45	3.70	4.10	B	H	1-1/2	7/8	1/16	1-1/4	7/16	1.0
BK50-H	4.75	4.00	4.40	B	H	1-1/2	7/8	1/16	1-1/4	7/16	1.0
BK52-H	4.95	4.20	4.60	B	H	1-1/2	7/8	1/16	1-1/4	7/16	1.1
BK55-H	5.25	4.50	4.90	B	H	1-1/2	7/8	1/16	1-1/4	7/16	1.4
BK57-H	5.45	4.70	5.10	B	H	1-1/2	7/8	1/16	1-1/4	7/16	1.5
BK60-H	5.75	5.00	5.40	B	H	1-1/2	7/8	1/16	1-1/4	7/16	1.5
BK62-H	5.95	5.20	5.60	B	H	1-1/2	7/8	1/16	1-1/4	7/16	1.6
BK65-H	6.25	5.50	5.90	B	H	1-1/2	7/8	1/16	1-1/4	7/16	1.8
BK67-H	6.45	5.70	6.10	B	H	1-1/2	7/8	1/16	1-1/4	7/16	1.8
BK70-H	6.75	6.00	6.40	C	H	1-1/2	7/8	1/8	1-1/4	1/2	1.5
BK72-H	6.95	6.20	6.60	C	H	1-1/2	7/8	1/8	1-1/4	1/2	1.6
BK75-H	7.25	6.50	6.90	C	H	1-1/2	7/8	1/8	1-1/4	1/2	1.5
BK77-H	7.45	6.70	7.10	C	H	1-1/2	7/8	1/8	1-1/4	1/2	1.7
BK80-H	7.75	7.00	7.40	C	H	1-1/2	7/8	1/8	1-1/4	1/2	1.8
BK85-H	8.25	7.50	7.90	C	H	1-1/2	7/8	1/8	1-1/4	1/2	1.9
BK90-H	8.75	8.00	8.40	C	H	1-1/2	7/8	1/8	1-1/4	1/2	2.0
BK95-H	9.25	8.50	8.90	C	H	1-1/2	7/8	1/8	1-1/4	1/2	2.2
BK100-H	9.75	9.00	9.40	C	H	1-1/2	7/8	1/8	1-1/4	1/2	2.3
BK105-H	10.25	9.50	9.90	C	H	1-1/2	7/8	1/8	1-1/4	1/2	2.4
BK110-H	10.75	10.00	10.40	C	H	1-1/2	7/8	1/8	1-1/4	1/2	2.7
BK115-H	11.25	10.50	10.90	C	H	1-1/2	7/8	1/8	1-1/4	1/2	2.9
BK120-H	11.75	11.00	11.40	C	H	1-1/2	7/8	1/8	1-1/4	1/2	3.0
BK130-H	12.75	12.00	12.40	C	H	1-1/2	7/8	1/8	1-1/4	1/2	3.3
BK140-H	13.75	13.00	13.40	C	H	1-1/2	7/8	1/8	1-1/4	1/2	3.9
BK150-H	14.75	14.00	14.40	C	H	1-1/2	7/8	1/8	1-1/4	1/2	4.3
BK160-H	15.75	15.00	15.40	C	H	1-1/2	7/8	1/8	1-1/4	1/2	4.6
BK190-H	18.75	18.00	18.40	C	H	1-1/2	7/8	1/8	1-1/4	1/2	5.6

O peso não inclui a bucha. Na página D-204 encontrará as dimensões das buchas.
Dimensões em polegadas, peso em kilos.

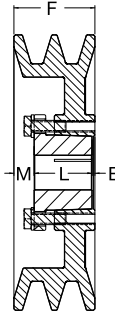


Polias de Canais Duplos para Potência Fracionária (FHP) com Bucha MST®

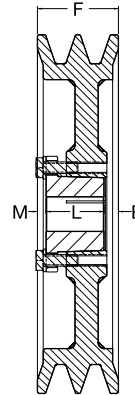
2BK-H



Tipo A Sólida



Tipo B Alma



Tipo C Raios

Polias FHP — 2BK-H

Número de Parte	DE	Diâmetro de Passo		Tipo	Bucha	Furo Máximo da Bucha	F	E	Compr. Total L	M	Peso sem Bucha Kg
		Ref. Correias A(4L)	Ref. Correias B(5L)								
2BK32-H	3.35	2.60	3.00	A	H	1-1/2	1-3/4	1-3/8	1-1/4	7/8	1.0
2BK34-H	3.55	2.80	3.20	A	H	1-1/2	1-3/4	1-3/8	1-1/4	7/8	1.2
2BK36-H	3.75	3.00	3.40	A	H	1-1/2	1-3/4	15/16	1-1/4	7/8	1.1
2BK40-H	3.95	3.20	3.60	A	H	1-1/2	1-3/4	15/16	1-1/4	7/16	1.2
2BK45-H	4.25	3.50	3.90	A	H	1-1/2	1-3/4	15/16	1-1/4	7/16	1.4
2BK47-H	4.45	3.70	4.10	B	H	1-1/2	1-3/4	1/16	1-1/4	7/16	1.5
2BK50-H	4.75	4.00	4.40	B	H	1-1/2	1-3/4	1/16	1-1/4	7/16	1.7
2BK52-H	4.95	4.20	4.60	B	H	1-1/2	1-3/4	1/16	1-1/4	7/16	1.9
2BK55-H	5.25	4.50	4.90	B	H	1-1/2	1-3/4	1/16	1-1/4	7/16	1.9
2BK57-H	5.45	4.70	5.10	B	H	1-1/2	1-3/4	1/16	1-1/4	7/16	2.0
2BK60-H	5.75	5.00	5.40	B	H	1-1/2	1-3/4	1/16	1-1/4	7/16	2.2
2BK62-H	5.95	5.20	5.60	B	H	1-1/2	1-3/4	1/16	1-1/4	7/16	2.4
2BK65-H	6.25	5.50	5.90	C	H	1-1/2	1-3/4	5/16	1-1/4	3/16	2.6
2BK67-H	6.45	5.70	6.10	C	H	1-1/2	1-3/4	5/16	1-1/4	3/16	2.6
2BK70-H	6.75	6.00	6.40	C	H	1-1/2	1-3/4	5/16	1-1/4	3/16	2.8
2BK72-H	6.95	6.20	6.60	C	H	1-1/2	1-3/4	5/16	1-1/4	3/16	2.8
2BK80-H	7.75	7.00	7.40	C	H	1-1/2	1-3/4	5/16	1-1/4	3/16	3.4
2BK90-H	8.75	8.00	8.40	C	H	1-1/2	1-3/4	5/16	1-1/4	3/16	3.9
2BK100-H	9.75	9.00	9.40	C	H	1-1/2	1-3/4	5/16	1-1/4	3/16	4.4
2BK110-H	10.75	10.00	10.40	C	H	1-1/2	1-3/4	5/16	1-1/4	3/16	4.9
2BK120-H	11.75	11.00	11.40	C	H	1-1/2	1-3/4	5/16	1-1/4	3/16	5.4
2BK130-H	12.75	12.00	12.40	C	H	1-1/2	1-3/4	5/16	1-1/4	3/16	6.1
2BK140-H	13.75	13.00	13.40	C	H	1-1/2	1-3/4	5/16	1-1/4	3/16	6.9
2BK160-H	15.75	15.00	15.40	C	H	1-1/2	1-3/4	5/16	1-1/4	3/16	8.1
2BK190-H	18.75	18.00	18.40	C	H	1-1/2	1-3/4	5/16	1-1/4	3/16	10.3

O peso não inclui a bucha. Na página D-204 encontrará as dimensões das buchas. Dimensões em polegadas, peso em kilos.

Buchas MST "H" – Furo em Polegadas

Diâmetro do Eixo	Larg. x Profundidade do Rasgo de Chaveta	Diâmetro do Eixo	Larg. x Profundidade do Rasgo de Chaveta	Diâmetro do Eixo	Larg. x Profundidade do Rasgo de Chaveta
3/8	NENHUM	3/4	3/16 x 3/32	1-1/8	1/4 x 1/8
7/16	NENHUM	25/32	3/16 x 3/32	1-3/16	1/4 x 1/8
1/2	1/8 x 1/16	13/16	3/16 x 3/32	1-1/4	1/4 x 1/8
9/16	1/8 x 1/16	7/8	3/16 x 3/32	1-5/16	5/16 x 1/16
19/32	1/8 x 1/16	15/16	1/4 x 1/8	1-3/8	5/16 x 1/16
5/8	3/16 x 3/32	31/32	1/4 x 1/8	1-3/8	3/8 x 1/16
21/32	3/16 x 3/32	1	1/4 x 1/8	1-7/16	3/8 x 1/16
11/16	3/16 x 3/32	1-1/16	1/4 x 1/8	1-1/2	3/8 x 1/32

Buchas MST "H" – Furo Milimétrico

Diâmetro do Eixo	Larg. x Profundidade do Rasgo de Chaveta	Diâmetro do Eixo	Larg. x Profundidade do Rasgo de Chaveta
10	NENHUM	24	8 x 3.3
11	NENHUM	25	8 x 3.3
12	NENHUM	28	8 x 3.3
14	5 x 2.3	30	8 x 3.3
16	5 x 2.3	32	10 x 1.3
18	6 x 2.8	35	10 x 0.3
19	6 x 2.8	36	10 x 1.3
20	6 x 2.8	38	10 x 0.3
22	6 x 2.8		